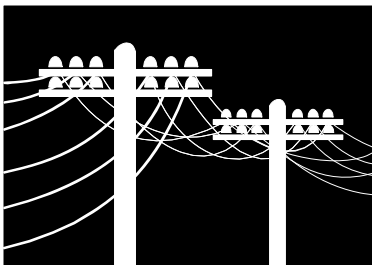


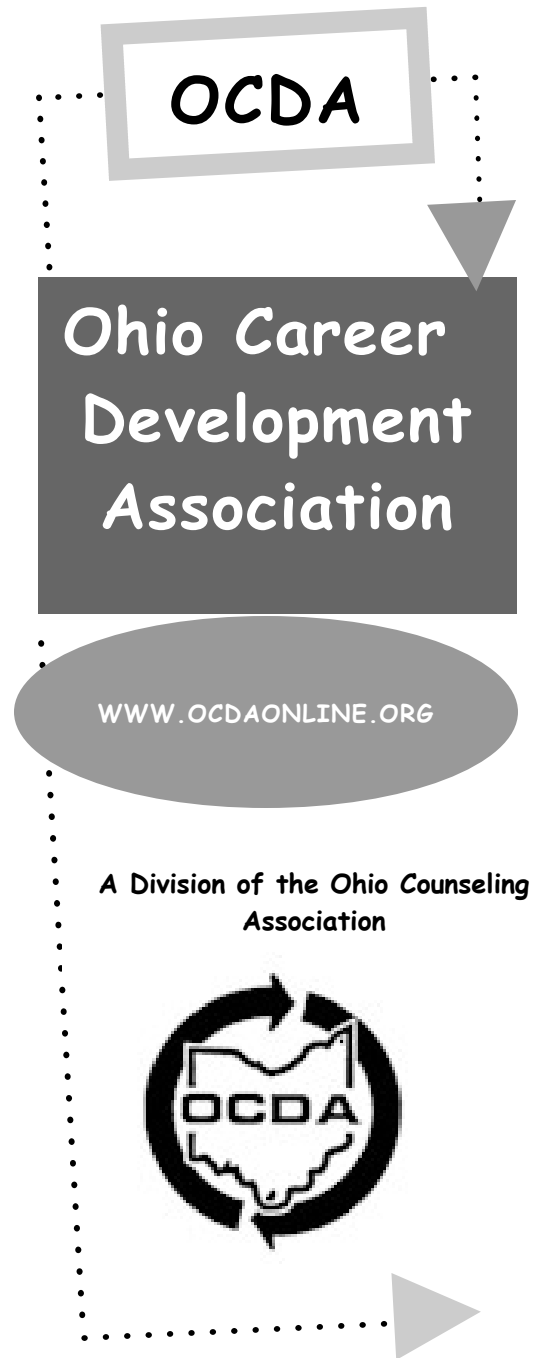
**Why Join
OCDA?**

- Discounts on Conferences & CPE's (CEU's)
- Professional Development
- Newsletter—3 issues
- A Referral Network
- Leadership Opportunities



OCDA provides networking opportunities for career professionals

OCDA
Bob Windle, Membership Chair
16830 Holbrook Rd.
Cleveland, Ohio 44120

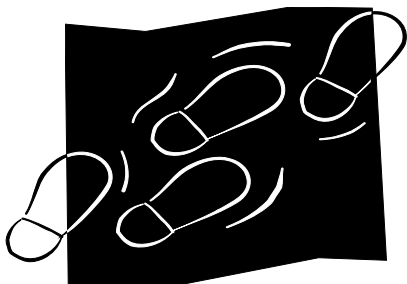


Become a Member

OCDA membership encompasses all career development providers including counselors, educators, business professionals, graduate students and paraprofessionals. The OCDA community represents a wide array of settings including education, private practice, business, and public and private institutions.

Membership is open to ALL who:

1. Promote the career development of all people over the lifespan.
2. Improve the standards of professional career service in Ohio.



Walk the talk: Be an advocate for Career Development

OCDA is a division of the Ohio Counseling Association (OCA) and the Ohio division of the National Career Development Association (NCDA) which was founded in 1913. NCDA is a division of the American Counseling Association (ACA).



*Staying in touch:
A key to a successful professional*

OCDA Conferences-Past & Present (CPE's)

- Career as Story—Mark Savickas
- Investment in Assessment: Three Systems: Vocopher, OCIS, Kuder
- Holistic Life Planning—Sunny Hansen
- Counseling Adults in Transition—Jane Goodman
- Holland's Self-Directed Search-Jack Rayman
- 21st Century Cybervision-JoAnn Harris-Bowlsbey & David Reile
- Hand Me Down Dreams: How Families Influence Career Paths-Mary Jacobsen
- Revised MBTI and the 16 PF
- Alternative Approaches to Career Counseling and Development

Make Checks payable to OCDA

Mail to:

Bob Windle, Membership Chair
16830 Holbrook Road
Cleveland, OH 44120

Questions? windle39@sbcglobal.net

OCDA Membership Application

Last Name: _____

First Name: _____

Street/Apt: _____

City/State: _____

Email: _____

Home Phone: _____

Work Phone: _____

Employer: _____

Position: _____

▷ Professional \$20
(Masters Degree: Counseling or related field)

▷ Associate \$20
(Degree, no counseling credential)

▷ Retired \$10

▷ Student \$10

_____ PCC/PC _____ NCC

Ethics Agreement: *As an OCDA member, I agree to uphold the NCDA Code of Ethics (www.ncda.org) click on guidelines.*

Signature: _____